







SOCIAL DISTANCING

Please keep 2 metres/ 6 feet apart
at all times

Przez cały czas należy trzymać 2
metry / 6 stóp od siebie

Vždy majte odstup 2 metre

Vždy mějte vzdálenost 2 metry / 6
stop

Visada laikykitēs 2 metru / 6 pēdu
atstumu



Temporary Canteen



Social Distancing for canteen Service



Reinforce the message



Take out chairs to ensure compliance



Canteens can still be a sociable place.





Disperse facilities to prevent queuing



Handwashing station social distancing enforced.



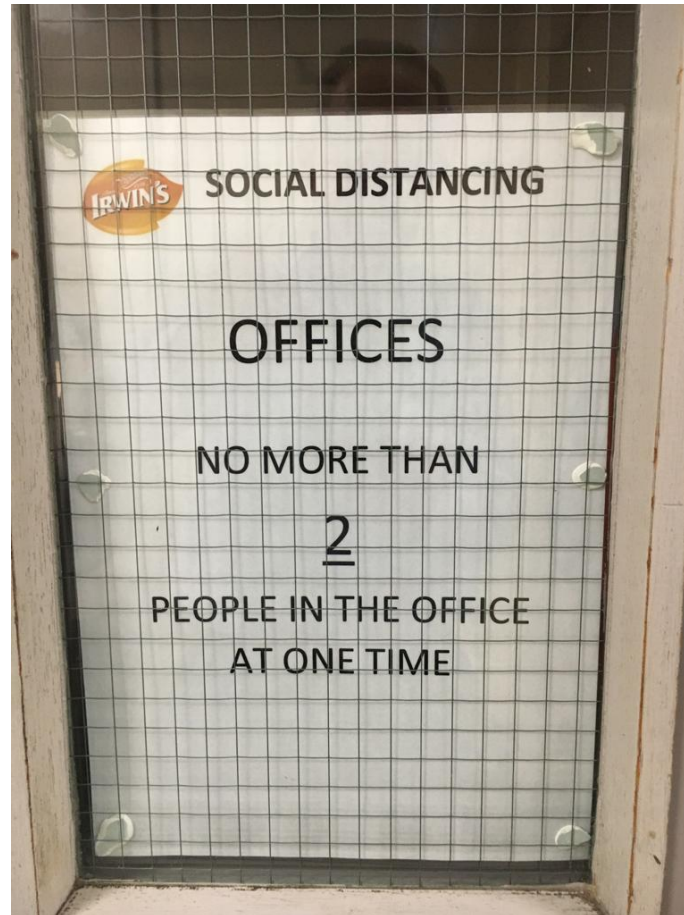
Extend conveyor belts to separate work stations





Each workstation has all
its requirements.
Screens to ensure
separate spaces.





Use of Screens when 2 metre distancing not possible



Wash station





SOCIAL DISTANCING

MALE

CHANGING

NO MORE THAN

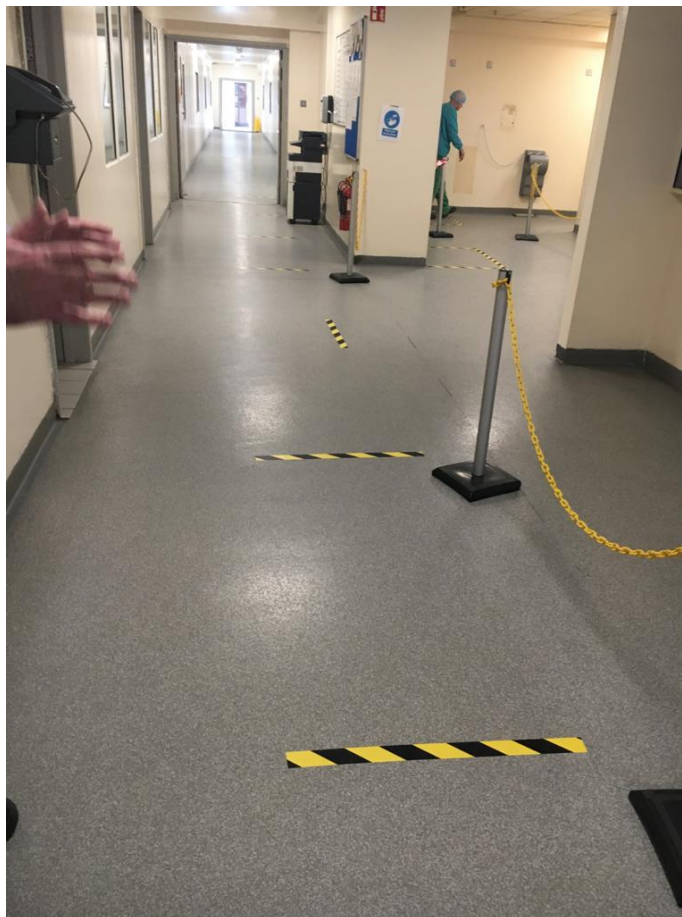
7

**IN THE CHANGING ROOM AT
ONE TIME**



Queue for changing





Queue for Changing



Measures Taken to Improve Social Distancing

- Shift start and finish times staggered to avoid build-up of staff at clocking stations.
- Clocking areas changed to minimise risk
- Changing rooms limited to safe number e.g 5 /7. Queueing spaces in corridor marked on floor.
- Canteen – All office staff to eat at their desks or in cars. One chair per table, tables spaced out. One person only goes to vending machines etc.
- Queueing strips at canteen servery.
- Staff more than 50% of staff in factory offices any day working from home 3 days out of 5 rotating. Only 2 people in any enclosed office
- All corridor and office doors wedged open to minimise hand contact
- Packing line conveyor belts extended to allow spacing.
- Perspex screens erected where staff must work side by side.
- Packing lines slowed down to minimise packing staff required.
- Hand washing stations personal safety space marked out.
- Social distancing enforced in external smoking area
- All door and other touch points cleaned every 2 hours.
- Touch screens now operated by individually issued screen stylus.
- Mats purchased to indicate social distancing measures
- Extra signs to indicate waiting areas
- We continually listen to our staff to improve social distancing measures and improvements are made daily.

